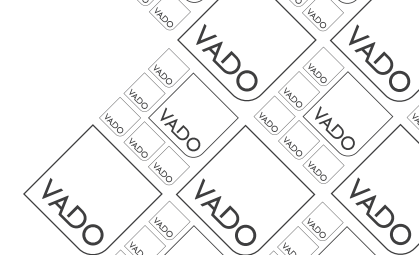




where inspiration flows

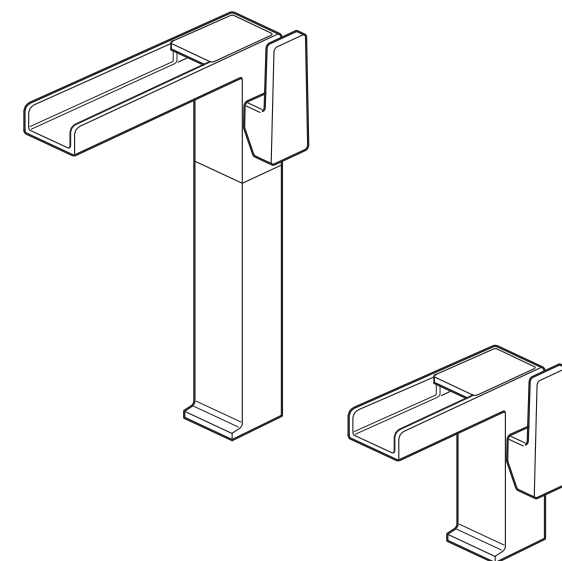
SYNERGIE



Installation Guide
Mono Basin Mixers

This instruction booklet covers models:
SYN-100 & SYN-100E.

100
100E



Vado
Wedmore Road, Cheddar, Somerset, England BS27 3EB
tel 01934 744466. fax 01934 744345
aftersales@vado.com
www.vado.com



Important - please read

Please read these instructions carefully before starting installation and keep for future reference.

Remove all packaging and check the product for missing parts or damage before starting installation.

Any alterations made to this product and fittings may infringe water regulations and will invalidate the guarantee.

The installation must comply with all Local/National Water Supply Authority Regulations/Byelaws and Building and Plumbing Regulations.
To be installed in accordance with BS EN806.

We strongly recommend that you use a qualified and registered plumber.

General installation

This fitting is a mixing device and therefore water supplies should be reasonably balanced.

When installed, the fitting must comply with the requirements of the Water Supply (Water Fittings) Regulations 1999 and Scottish Byelaws 2004.

For further information, contact the Water Regulations department of your local water supplier (see the WRAS website www.wras.co.uk for details) or the Water Regulations Advisory Scheme by email (info@wras.co.uk) or telephone: 01495848454.

Before making any inlet pipe connections, all supply pipes MUST be thoroughly flushed to remove debris. Failure to do so could result in damage or low flow from the mixer unit. Water Supply (Water Fittings) Regulations 1999 Schedule 2 Section 13.

The fitting of isolating valves to the inlet feeds is advised for ease of maintenance.

Please take great care when installing this mixer not to damage its surface.

Please note if installing in an enclosed environment, access should be left for servicing and maintenance. No costs relating to inadequate access can be accepted.

Operating Specifications

Operating Pressure

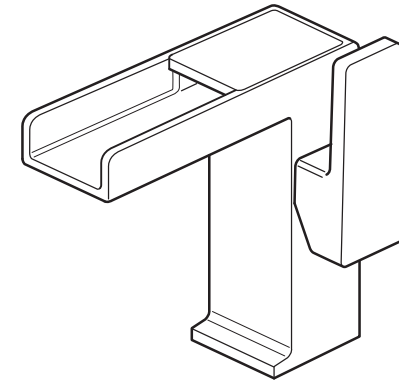
Minimum operating pressure 1 bar

Maximum operating pressure 5 bar

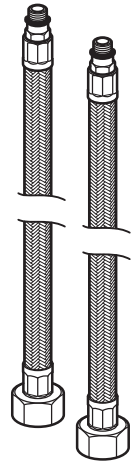
Contents of Packaging



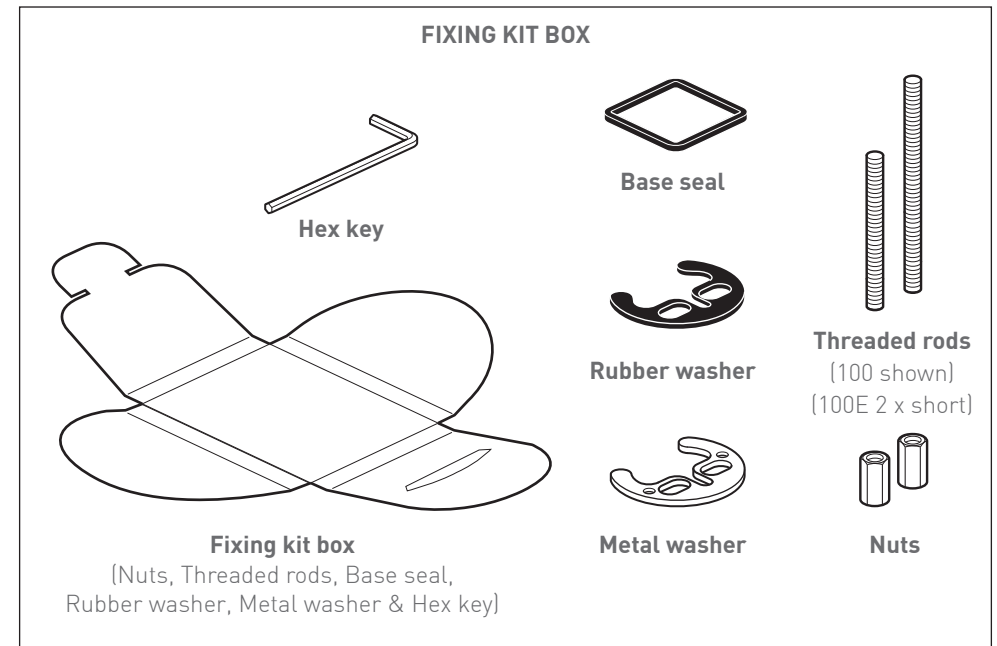
**Installation guide &
User manual**
(100 shown)



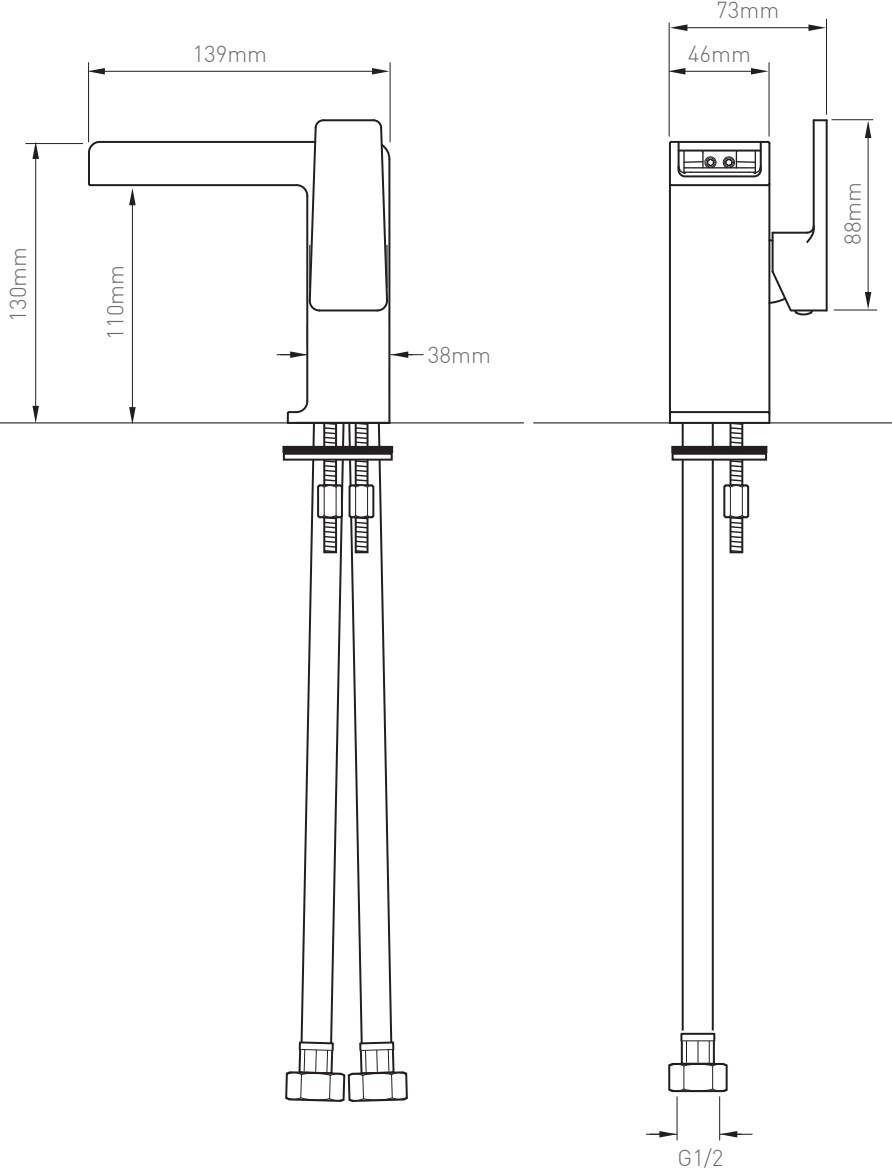
Valve body 100 or 100E
(100 shown)



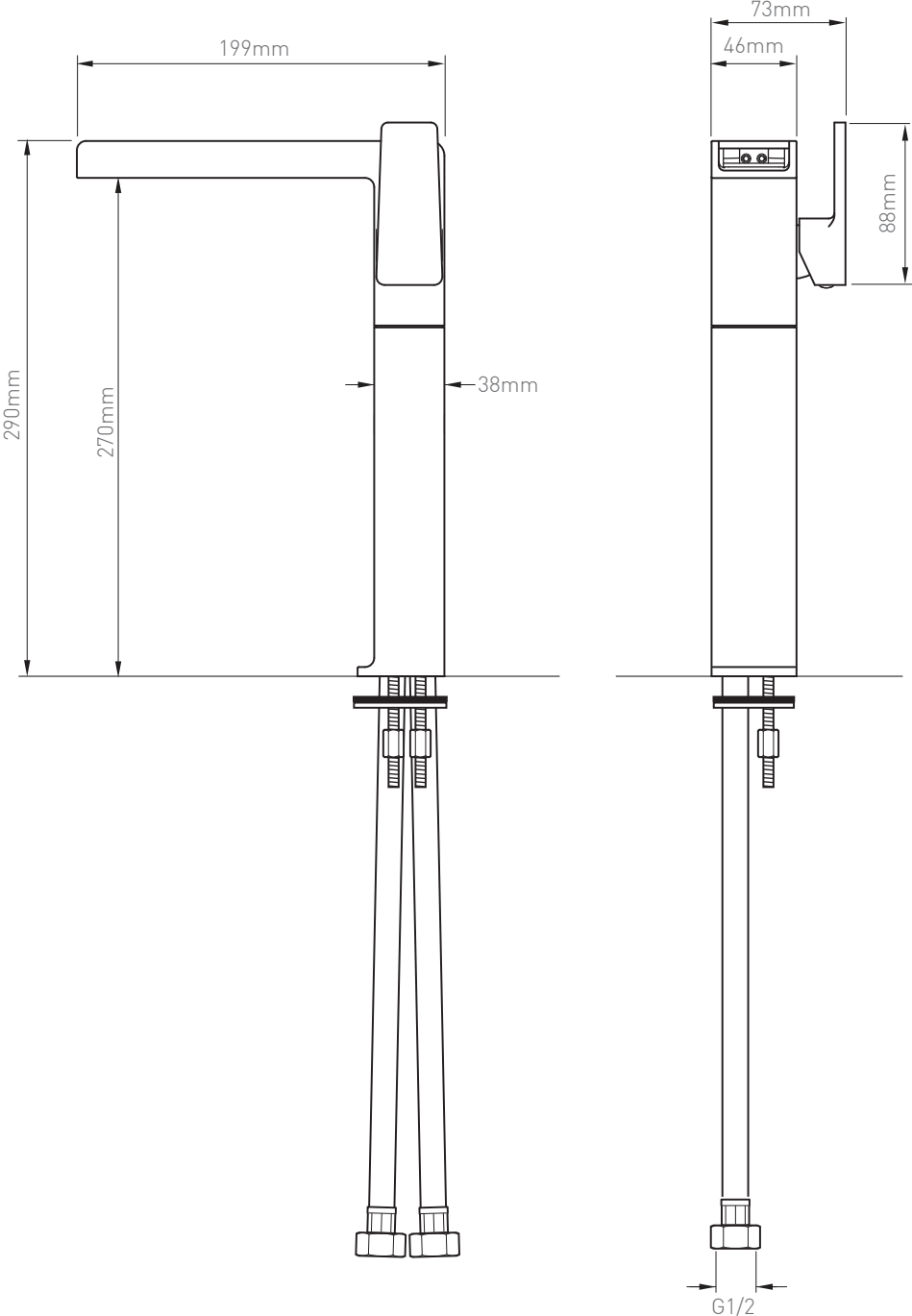
Flexible hoses
(Red for hot,
Blue for cold)



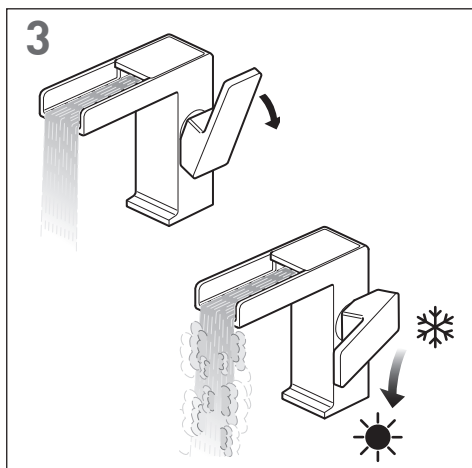
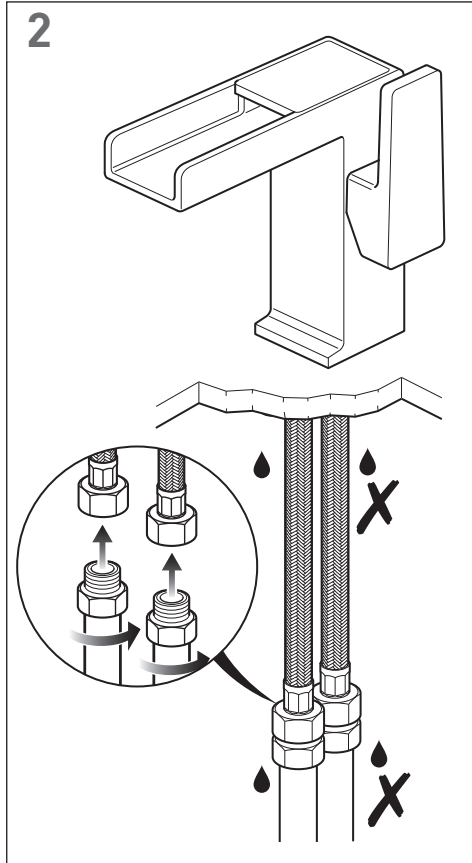
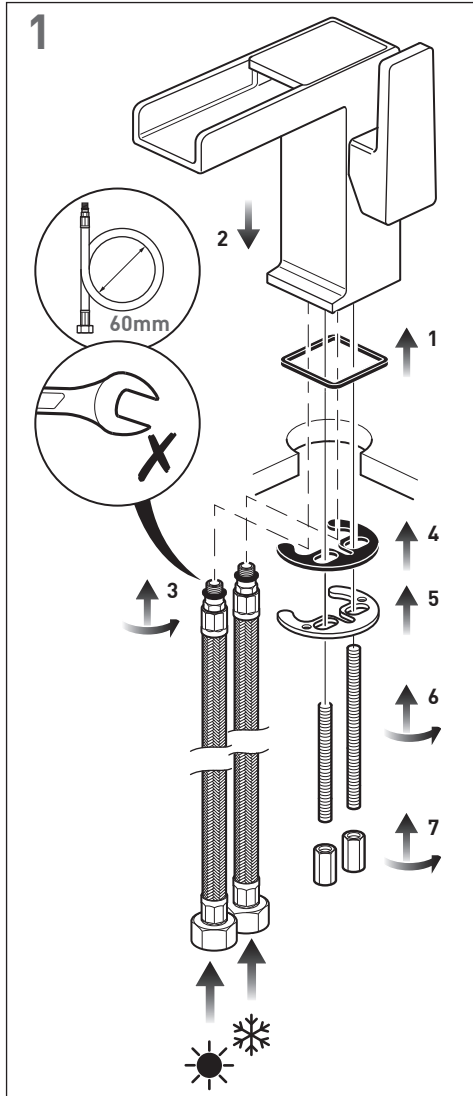
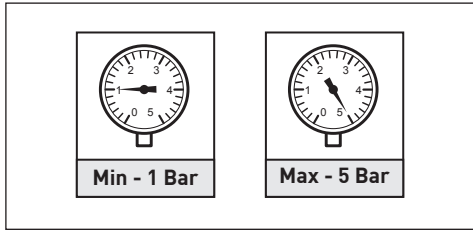
Valve dimensions - 100



Valve dimensions - 100E



Installation - Quick guide



Installation

NOTE: For illustrative purposes only the 100 tap installation is shown. Please follow the same procedure to install the 100E tap.

Before installing your new mixer, flush through the pipework to ensure removal of debris, turn off the water supply.

Place the seal in the slot on the underside of the mixer body.

Position the mixer on the basin. From the underside of the basin screw the two flexible pipes to the hot and cold connections in the mixer body, the hot should be to the front and the cold to the back, hand tighten only.

Screw the two threaded rods into the body the short rod to the front and long at the back. Both rods are the same for the 100E.

Clip together the rubber and metal washers and slide over the rods, the rubber washer should be on top. Screw on the nuts and tighten to clamp the mixer to the basin.

CAUTION: Do not over tighten the nuts as this may damage the basin.

Connect the water supply to the inlet pipes. The hot water should be connected to the front pipe and cold to the back.

