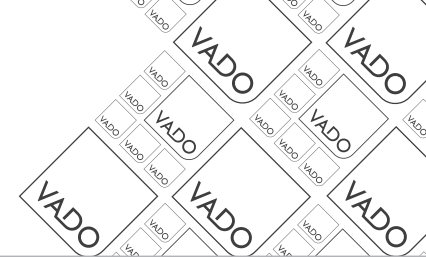




where inspiration flows

MUSE

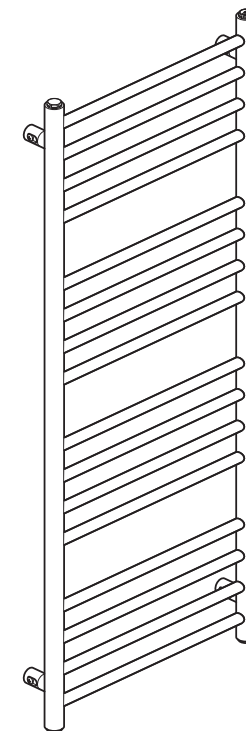
Installation Guide
Heated towel rail, round



This instruction booklet covers these models:

MUS-HTR-R01200
(All finish options)

MUS-HTR-R01200



Vado
Wedmore Road, Cheddar, Somerset, England BS27 3EB
tel 01934 744466. fax 01934 744345
aftersales@vado.com
www.vado.com



Important - Please Read

VADO reserves the right to make technical improvements and enhance the appearance of the products included in this instruction manual.

Please read these instructions carefully before starting the installation and keep for future reference.

Remove all packaging and check the product for missing parts or damage before starting installation.

Any alterations made to this product and fittings may infringe water regulations and will invalidate the guarantee.

Please take great care when installing this product not to damage its surface.

The plumbing codes applicable in the respective countries must be observed.

This installation guide details fitting to a solid wall. For other substrates, please use appropriate fixings and joists (if required). Ensure the wall can take weight of the product detailed within this guide. Do not hang excessive loads from the towel warmer rails. While securely anchored to the wall when properly installed, it is not intended to replace or serve as a grab bar.

Check for any hidden pipes or electrical cables before drilling holes in the wall/

Do not use the heated towel rail for anything other than its intended purpose of warming and drying bathroom towels. Do not hang loads of over 5kg on the heated towel rail.

The heated towel rail is intended for use in sealed central heating systems, it must not be installed in open-vented or domestic hot water systems.

Remember to bleed your central heating system and the heated towel rail. The specific requirements for sealed central heating systems, water quality, and their operation are established in the regulations applicable in each respective country.

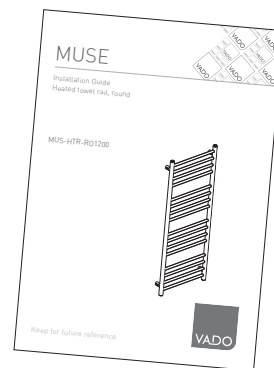
Cleaning Instructions

The coating on this product is finished to the highest standard. Due care needs to be taken to ensure the appearance is retained.

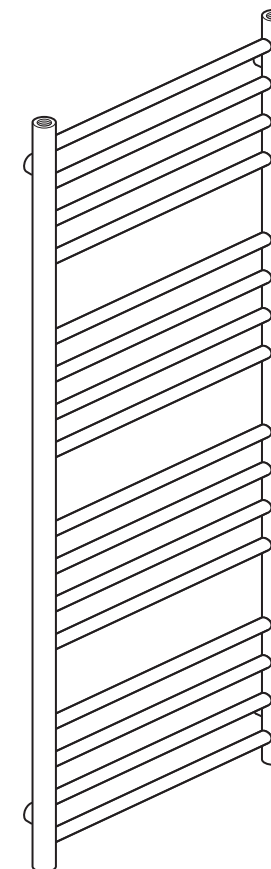
We recommend cleaning all products with a soft damp cloth ONLY and advise strongly against the use of all aggressive/corrosive cleaning products i.e. powders and liquids. If these instructions are not followed, this may invalidate your guarantee in the event of a problem occurring.

Allow the heated towel rail to cool before cleaning.

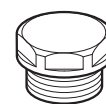
Contents of Packaging



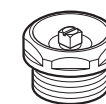
Installation guide



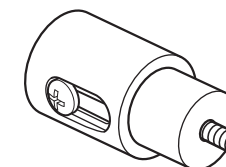
Towel rail



Blanking cap x 1

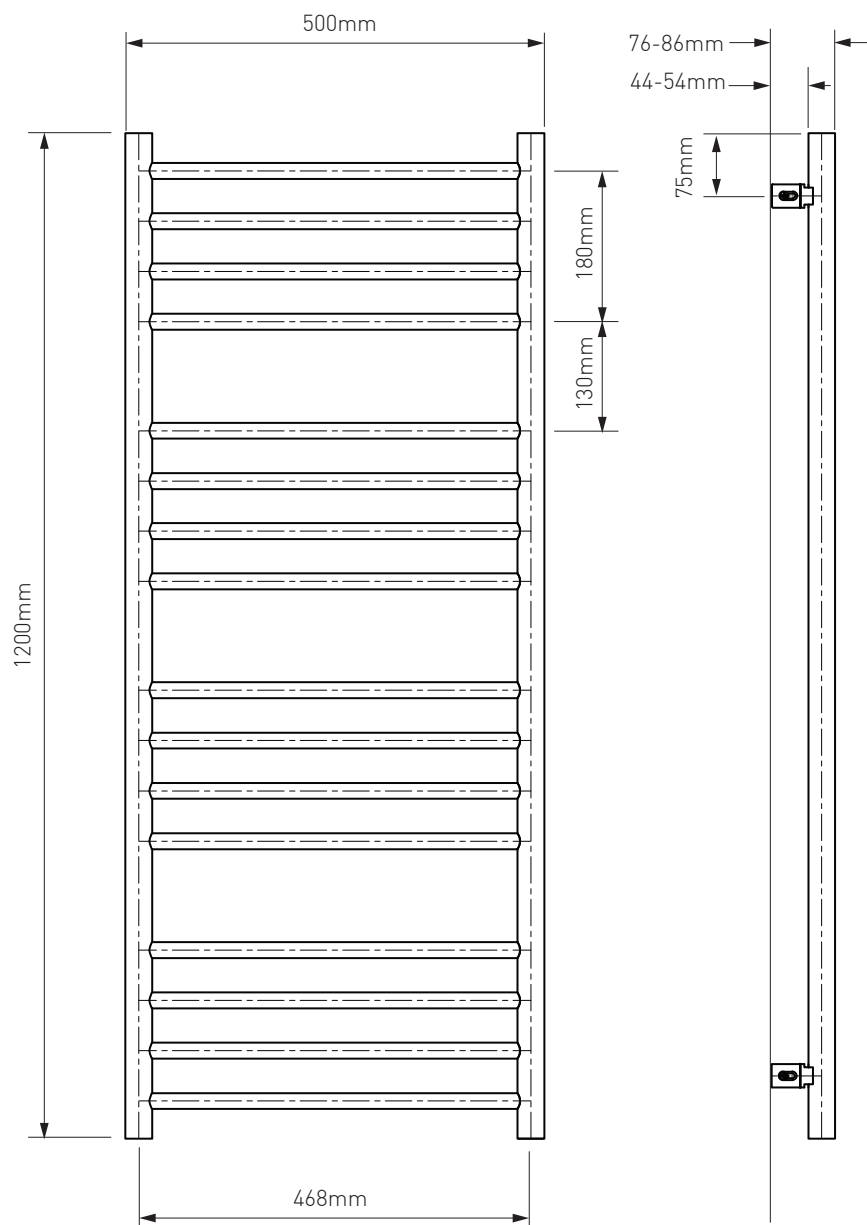


Bleed cap x 1

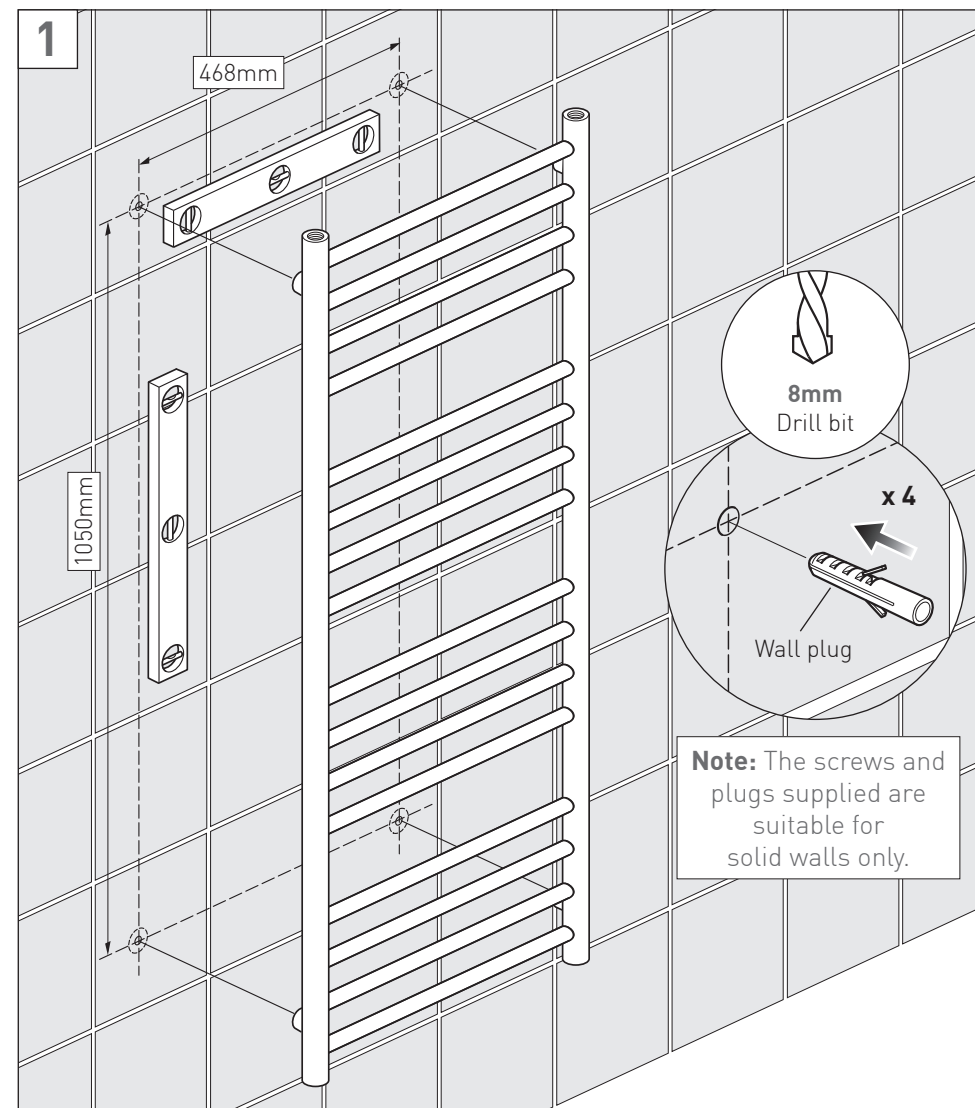


Wall Bracket x 4

Dimensions

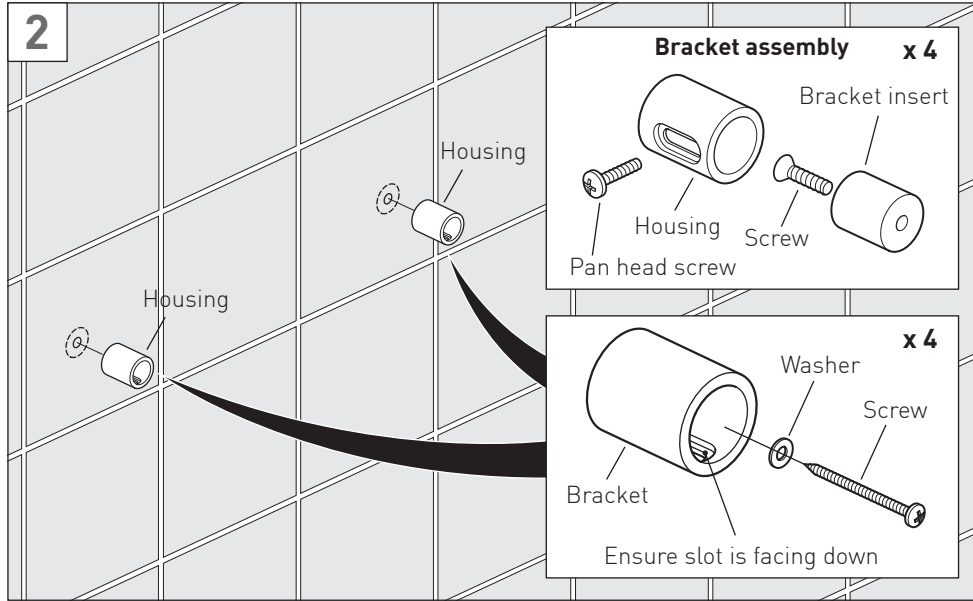


Installation

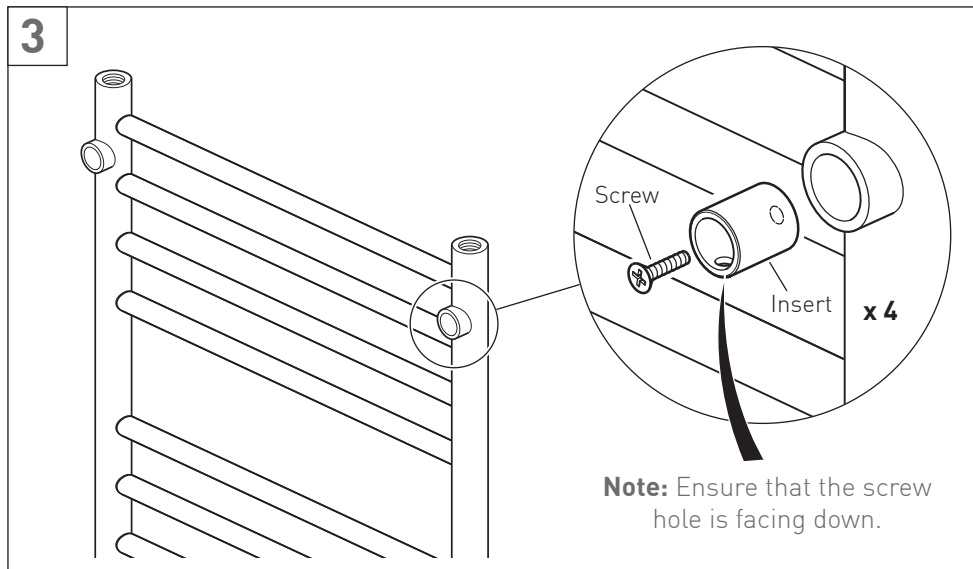


Measure and note the distance between the centres of the four mounting keyholes. Determine the desired location of the heated towel rail. Using a spirit level, mark the hole location on the wall. Using a suitable drill bit for your wall, drill the four mounting holes and fit the wall plugs level with the surface of the wall. When fitting to a tiled surface, position wall plugs below the tile surface to prevent cracking.

Installation

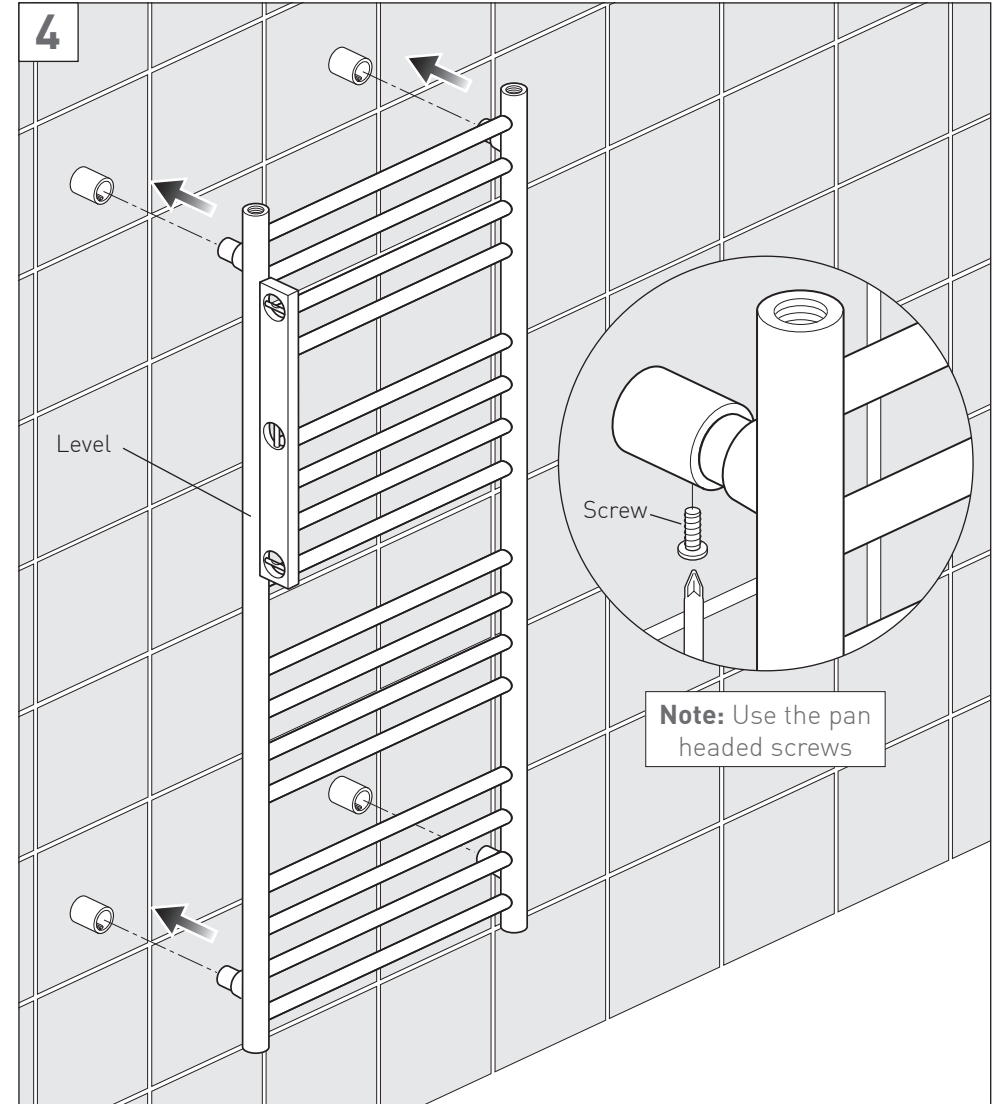


Disassemble the wall brackets and attach each housing to the wall using a washer and screw. Ensure the slot is facing down on each bracket housing.



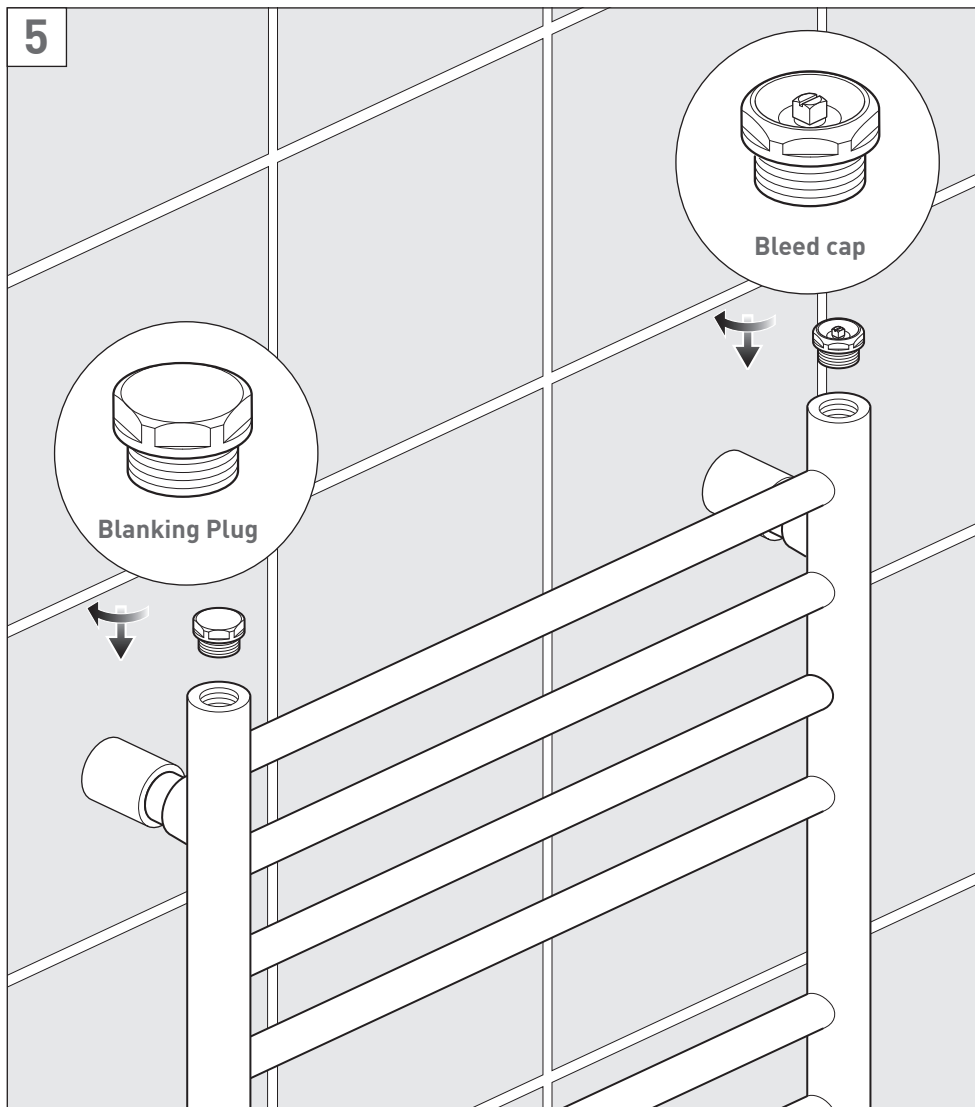
Using the counter sunk screw fix the bracket insert onto each keyhole on the heated towel rail, ensuring the screw hole is facing down.

Installation



Place the heated towel rail into the bracket housings and insert one of remaining screws into each bracket lining up both holes. Use a level to make sure that the rail is vertical, the brackets have 10mm of adjustment.

Once satisfied with the adjustment on each bracket tighten the screws.



Using a spanner, screw the caps onto the top of the heated towel rail.

Guarantee

This VADO heated towel rail comes with a 2 year guarantee as standard. Within this guarantee period, VADO will provide replacement parts and any labour **[SEE NOTE 1]** needed to complete the product repair. This standard guarantee may be extended by registering your product on our website at: <https://www.vado.com/support/guarantee>.

Once registered this heated towel rail will have a 5 year guarantee (2 years parts and labour plus 3 years parts only) **[SEE NOTE 2]**.

Guarantee Conditions

Our products are guaranteed against manufacturing defects from the date of purchase until the expiry of the relevant guarantee period shown above.

The guarantee is only valid if:

- The product has been installed, used and maintained in accordance with VADO's instructions and subjected to normal use only.
- The defect is not due to accident, misuse, neglect, or incorrect/inappropriate repair (other than by VADO or VADO authorised agents) or damage caused by foreign objects or substances.
- The extended guarantee is only available if you have completed the guarantee registration process.

This can be done via the VADO website or via telephone to our Aftersales team.

Registration must be completed within 6 months from the date of purchase. Under the extended guarantee period VADO will, at its option, offer to supply any replacement product (or component part) assessed to be defective **[SEE NOTE 3]**.

- The guarantee (whether standard or extended) is non-transferable to any subsequent owner.

All claims under the guarantee should be notified in the first instance to our Aftersales department, contact details below, this must be done no later than the last day of the relevant guarantee period.

All claims must be accompanied by proof of purchase (sales receipt or delivery note) from an official VADO dealer.

The guarantee does not extend to any consequential loss or damage.

After repair or replacement, the relevant guarantee period will be calculated from the original date of purchase.

VADO operates a policy of continuous product development and therefore reserves the right to change the product, packaging and documentation specifications without notice.

In situations where like-for-like replacements are not possible, VADO will endeavour to provide the closest alternative. E&OE.

NOTES:

[1] Labour via our engineer network is only available in the UK. Attendance by a VADO engineer or sub-contract engineer will be under our standard terms and conditions.

[2] Excludes any electrical components.

[3] VADO reserves the right to charge in advance for a product (or replacement part) pending collection and investigation (at VADO expense) to confirm a defect is due to a manufacturing issue. If a defect is found the charge will be refunded or cancelled.

This guarantee is in addition to and does not affect your statutory rights as a consumer.

Tel: 01934 745163

Email: aftersales@vado.com