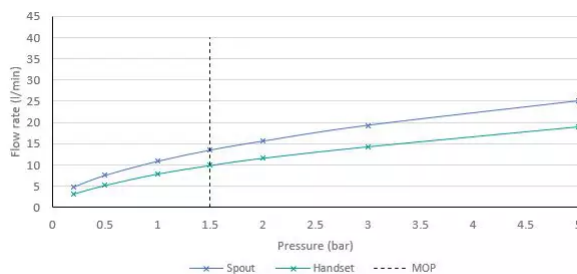
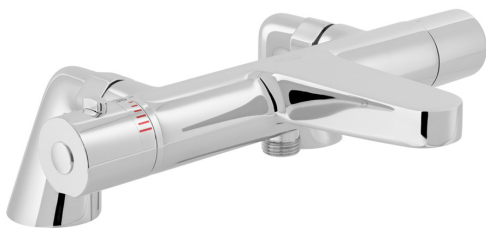


# SPECIFICATION SHEET

COLLECTION: SHOWERING SOLUTIONS, SIRKEL  
PRODUCT CODE: AX-SIR-131T-CP



The flow rate displayed is calculated using ideal system conditions. This result should only be taken as an indication as the flow rate may vary depending on the specific in-situ configuration.

## TAP TYPE

Bath Shower Mixer

## FOR USE WITH BATH FILLER WASTE AND OVERFLOW

No

## WITH SHOWER KIT

No

## WITH BATH SPOUT

No

## WITH EASY-FIT BRACKETS

No

## WITH AIR-INJECTION TECHNOLOGY

No

## WITH INTEGRATED DIVERTER

No

## WITH WATER FLOW STRAIGHTENER

Yes

## WITH THERMOSTATIC TECHNOLOGY

Yes

tel: 01934 744466  
email: [sales@vado.com](mailto:sales@vado.com)  
[www.vado.com](http://www.vado.com)

WHERE INSPIRATION FLOWS  
TAPS | SHOWERS | FURNITURE



# SPECIFICATION SHEET

COLLECTION: SHOWERING SOLUTIONS, SIRKEL  
PRODUCT CODE: AX-SIR-131T-CP

## WITH WATER FLOW AERATOR

No

## INSTALLATION TOLERANCES

min-max deck mount 28-30mm

## CONNECTIONS / FITTINGS

3/4" x 48mm threaded connection on legs

## HANDLES

2 Handle

## SPARE PARTS

Thermostatic Cartridge C-701-34S Diverter Cartridge C-801-27/2X

## DECK HOLE DRILL DIAMETER

28-34mm

## HOLES

2 Hole

## MOUNTING

Deck Mounted

## PLUMBING SYSTEM SUITABILITY

Pumped System, Combination Boiler, Pressurised System

## COLLECTION NAME

Showering Solutions, Sirkel

## FINISH

Chrome

## MINIMUM OPERATING PRESSURE

1.5 Bar MP

# SPECIFICATION SHEET

COLLECTION: SHOWERING SOLUTIONS, SIRKEL  
PRODUCT CODE: AX-SIR-131T-CP

## MAXIMUM OPERATING PRESSURE

5.0 Bar HP

## GUARANTEE

10 Year Guarantee

tel: 01934 744466  
email: [sales@vado.com](mailto:sales@vado.com)  
[www.vado.com](http://www.vado.com)

WHERE INSPIRATION FLOWS  
TAPS | SHOWERS | FURNITURE



# TECHNICAL DRAWING

COLLECTION: SHOWERING SOLUTIONS, SIRKEL  
PRODUCT CODE: AX-SIR-131T-CP

