

# SPECIFICATION SHEET

COLLECTION: VICTORIANA  
PRODUCT CODE: AX-VIC-120/CD-CP



## TAP TYPE

Bath Shower Mixer

## FOR USE WITH BATH FILLER WASTE AND OVERFLOW

No

## WITH SHOWER KIT

Yes

## WITH BATH SPOUT

No

## WITH EASY-FIT BRACKETS

No

## WITH AIR-INJECTION TECHNOLOGY

No

## WITH INTEGRATED DIVERTER

No

## WITH WATER FLOW STRAIGHTENER

No

## WITH THERMOSTATIC TECHNOLOGY

No

tel: 01934 744466  
email: [sales@vado.com](mailto:sales@vado.com)  
[www.vado.com](http://www.vado.com)

WHERE INSPIRATION FLOWS  
TAPS | SHOWERS | ACCESSORIES



# SPECIFICATION SHEET

COLLECTION: VICTORIANA  
PRODUCT CODE: AX-VIC-120/CD-CP

## WITH WATER FLOW AERATOR

No

## CONNECTIONS / FITTINGS

1/2" X 3/4" X 40mm eccentric threaded connections

## HANDLES

2 Handle

## SPARE PARTS

Cold Ceramic cartridge C-201-RTC Hot Ceramic cartridge C-201-LTC

## HOLES

2 Hole

## MOUNTING

Wall Mounted

## PLUMBING SYSTEM SUITABILITY

Gravity System, Pumped System, Combination Boiler, Pressurised System

## COLLECTION NAME

Victoriana

## FINISH

Chrome

## RECOMMENDED FLOW REGULATOR

FR-SHOWER/9-C/P

## MINIMUM OPERATING PRESSURE

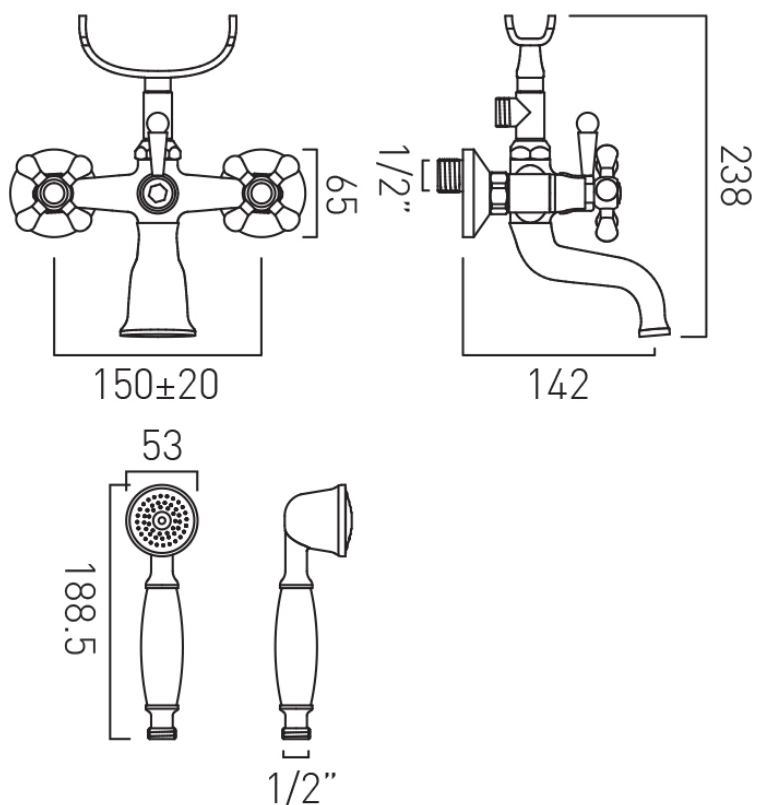
0.2 Bar LP

## GUARANTEE

10 Year Guarantee

# TECHNICAL DRAWING

COLLECTION: VICTORIANA  
PRODUCT CODE: AX-VIC-120/CD-CP



tel: 01934 744466  
email: sales@vado.com  
www.vado.com

WHERE INSPIRATION FLOWS  
TAPS | SHOWERS | ACCESSORIES

